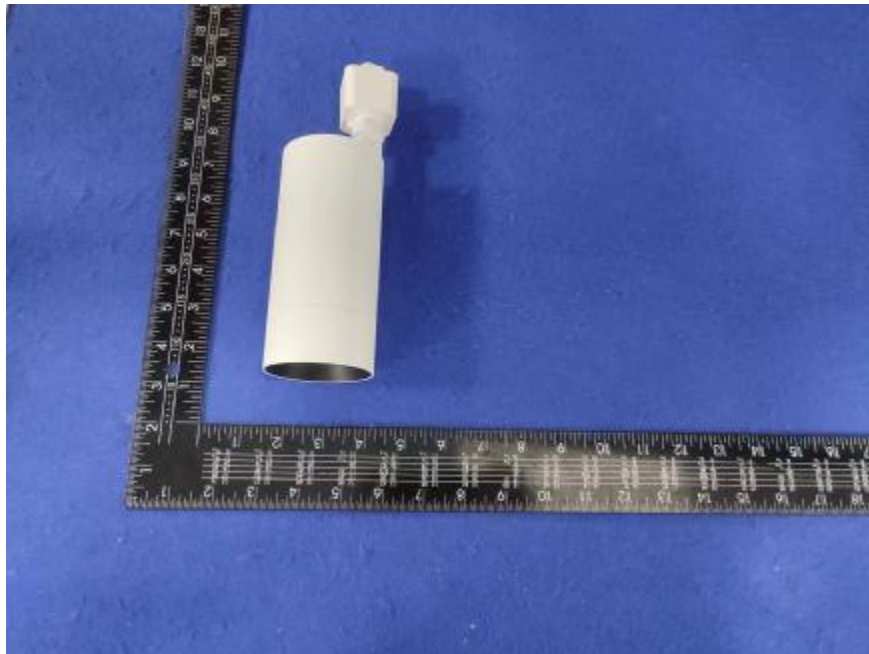


### Luminaire Photograph



Light Output Ratio:	84.3%	
Luminaire Power:	20.17 W	
SHR Nominal:	0.00	Calculated using the TM5
SHR Maximum:	0.30	fine grid method.

C Range: 0 - 360DEG  
C Interval: 30.0DEG  
Test Speed: HIGH  
Temperature: 25.3 °C  
Operators: zoe  
Test Date: 2023-6-13

Range: 0 - 180DEG  
Interval: 1.0DEG  
Test System: EVERFINE GO-SPEX500\_V1 SYSTEM V2.00.461  
Humidity: 65.0%  
Test Distance: 3.160m [K=1.0000]  
Remarks: LAMP: BXRE-30H1000-A-83 Ra: 97  
LENS: PM-0132 15R  
DRIVER: TDI018NA050EF 500mA  
30minutes warm-up

## LUMINOUS INTENSITY DISTRIBUTION DIAGRAM

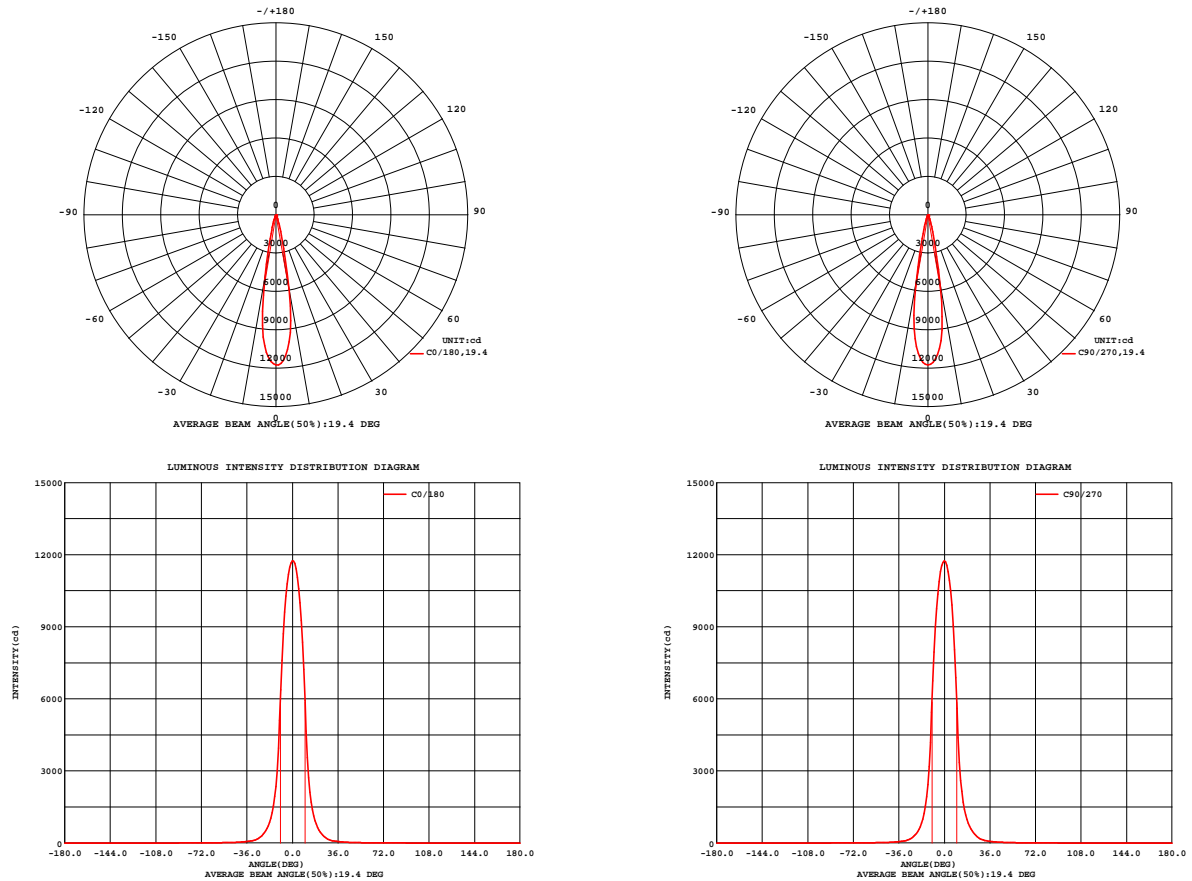


Fig. C0/C180

Fig. C90/C270

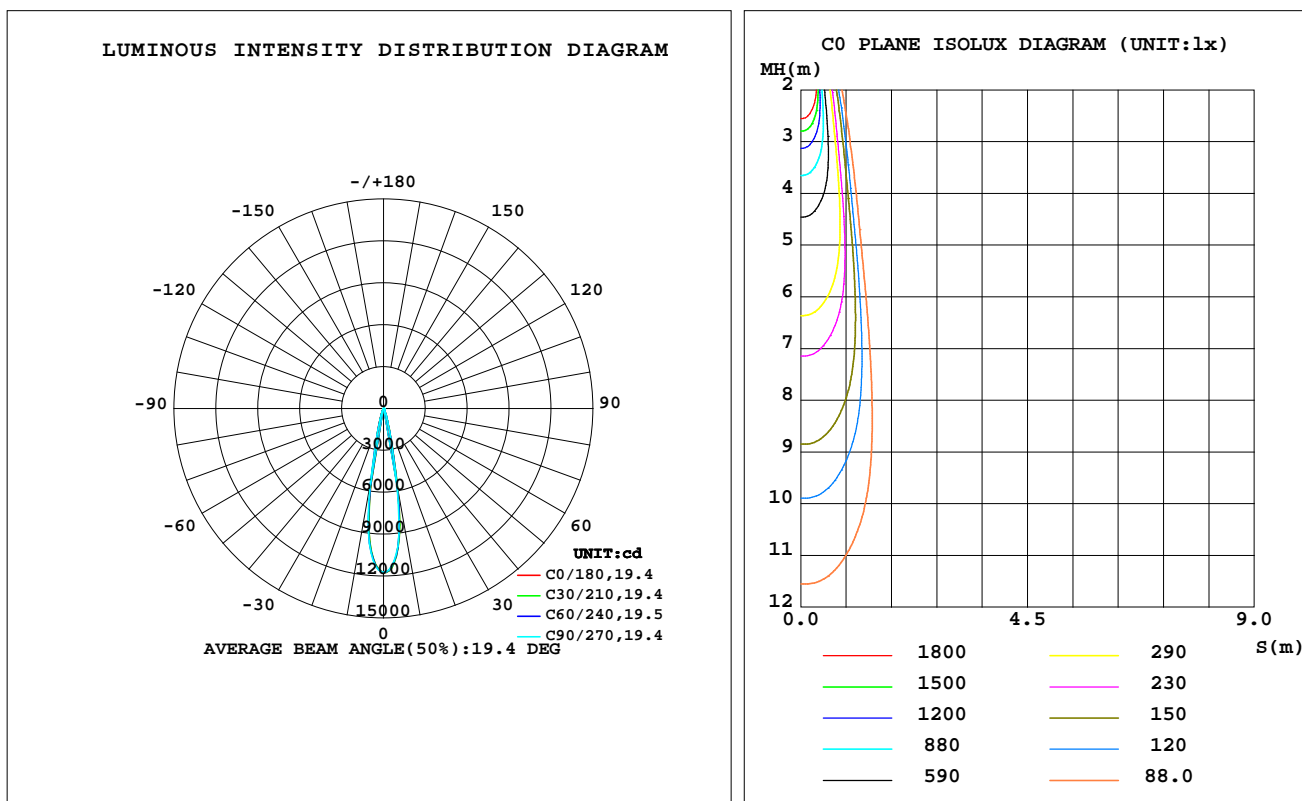
C Range: 0 - 360DEG  
C Interval: 30.0DEG  
Test Speed: HIGH  
Temperature: 25.3 °C  
Operators: zoe  
Test Date: 2023-6-13

Range: 0 - 180DEG  
Interval: 1.0DEG  
Test System: EVERFINE GO-SPEX500\_V1 SYSTEM V2.00.461  
Humidity: 65.0%  
Test Distance: 3.160m [K=1.0000]  
Remarks: LAMP: BXRE-30H1000-A-83 Ra: 97  
LENS: PM-0132 15R  
DRIVER: TDI018NA050EF 500mA  
30minutes warm-up

## LUMINAIRE PHOTOMETRIC TEST REPORT

Test:U:120.15V I:0.1699A P:20.173W PF:0.9863 Freq:59.98Hz Lamp Flux:1877.8x1 lm		
NAME: 2319.201-H3AM-500	TYPE:	WEIGHT:
SPEC.: 3000K	DIM.:	SERIAL No.: 2306130765
MFR.: RISE	SUR.: 0.002826m2	Shielding Angle:

DATA OF LAMP		PHOTOMETRIC DATA Eff: 78.46 lm/W			
MODEL	Brideglux	I <sub>max</sub> (cd)	11741	S/MH(C0/180)	0.30
NOMINAL POWER(W)	20	LOR(%)	84.3	S/MH(C90/270)	0.30
RATED VOLTAGE(V)	120	TOTAL FLUX(lm)	1582.8	UP,DN(C0-180)	0.0,43.4
NOMINAL FLUX(lm)	1877.8	CIE CLASS	DIRECT	UP,DN(C180-360)	0.0,40.9
LAMPS INSIDE	1	up(%)	0.0	CIBSE SHR NOM	0.00
TEST VOLTAGE(V)	120	down(%)	84.3	CIBSE SHR MAX	0.30



C Range: 0 - 360DEG  
C Interval: 30.0DEG  
Test Speed: HIGH  
Temperature:25.3℃  
Operators:zoe  
Test Date:2023-6-13

Range: 0 - 180DEG  
Interval: 1.0DEG  
Test System:EVERFINE GO-SPEX500\_V1 SYSTEM V2.00.461  
Humidity:65.0%  
Test Distance:3.160m [K=1.0000]  
Remarks: LAMP:BXRE-30H1000-A-83 Ra:97  
LENS:PM-0132 15R  
DRIVER: TDI018NA050EF 500mA  
30minutes warm-up

## ZONAL FLUX DIAGRAM

### ZONAL FLUX DIAGRAM:

	C0	C45	C90	C135	C180	C225	C270	C315		zone	total	%lum,lamp
10	592.9	589.7	560.0	531.8	510.5	515.9	544.3	574.6	0- 10	841.8	841.8	53.2,44.8
20	64.54	68.89	70.21	67.91	60.26	56.49	56.14	59.72	10- 20	526.1	1368	86.4,72.8
30	11.79	13.00	13.83	13.33	11.44	10.70	10.56	11.10	20- 30	134.0	1502	94.9,80
40	4.010	4.412	4.574	4.437	4.095	3.876	3.751	3.803	30- 40	44.52	1546	97.7,82.4
50	1.991	2.125	2.246	2.195	2.013	1.868	1.843	1.897	40- 50	21.42	1568	99.1,83.5
60	0.7354	0.7839	0.8252	0.7752	0.6959	0.6500	0.6766	0.7037	50- 60	12.00	1580	99.8,84.1
70	0.1045	0.0924	0.0948	0.0893	0.0840	0.0783	0.0919	0.0952	60- 70	2.584	1582	100,84.3
80	0.0059	0.0027	0.0043	0.0026	0.0050	0.0029	0.0041	0.0026	70- 80	0.3303	1583	100,84.3
90	0	0	0	0	0	0	0	0	80- 90	0.0311	1583	100,84.3
100	0	0	0	0	0	0	0	0	90-100	0	1583	100,84.3
110	0	0	0	0	0	0	0	0	100-110	0	1583	100,84.3
120	0	0	0	0	0	0	0	0	110-120	0	1583	100,84.3
130	0	0	0	0	0	0	0	0	120-130	0	1583	100,84.3
140	0	0	0	0	0	0	0	0	130-140	0	1583	100,84.3
150	0	0	0	0	0	0	0	0	140-150	0	1583	100,84.3
160	0	0	0	0	0	0	0	0	150-160	0	1583	100,84.3
170	0	0	0	0	0	0	0	0	160-170	0	1583	100,84.3
180	0	0	0	0	0	0	0	0	170-180	0	1583	100,84.3
DEG	LUMINOUS INTENSITY:X10cd									UNIT:lm		

C Range: 0 - 360DEG  
C Interval: 30.0DEG  
Test Speed: HIGH  
Temperature:25.3℃  
Operators:zoe  
Test Date:2023-6-13

Range: 0 - 180DEG  
Interval: 1.0DEG  
Test System:EVERFINE GO-SPEX500\_V1 SYSTEM V2.00.461  
Humidity:65.0%  
Test Distance:3.160m [K=1.0000]  
Remarks: LAMP:BXRE-30H1000-A-83 Ra:97  
LENS:PM-0132 15R  
DRIVER: TDI018NA050EF 500mA  
30minutes warm-up

### LUMINANCE LIMITATION CURVES

Test:U:120.15V I:0.1699A P:20.173W PF:0.9863 Freq:59.98Hz  
Lamp Flux:1877.8x1 lm

NAME: 2319.201-H3AM-500

TYPE:

WEIGHT:

SPEC.: 3000K

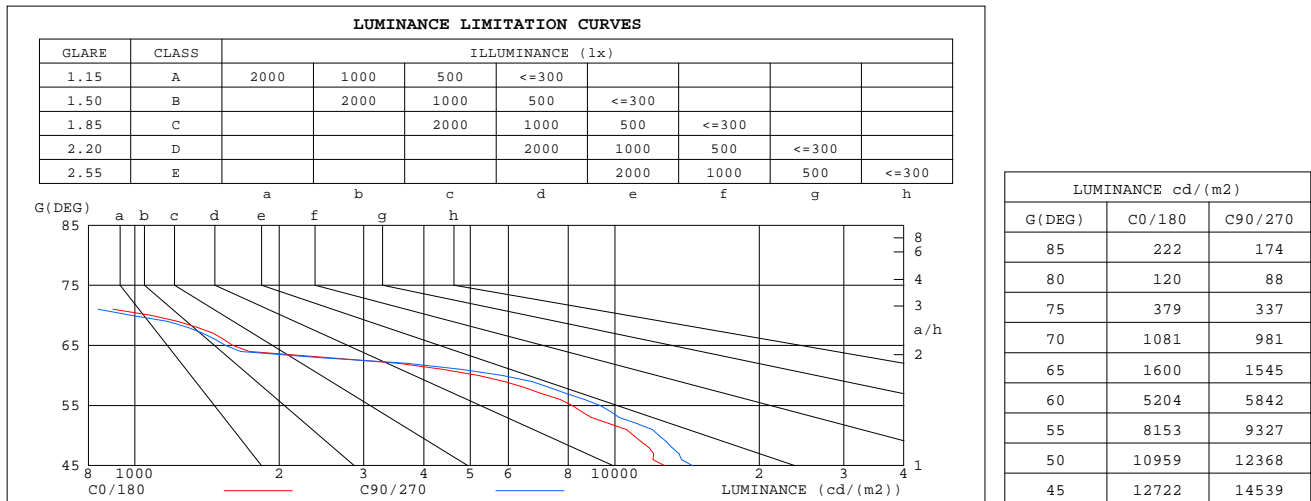
DIM.:

SERIAL No.: 2306130765

MFR.: RISE

SUR.: 0.002826m2

Shielding Angle:



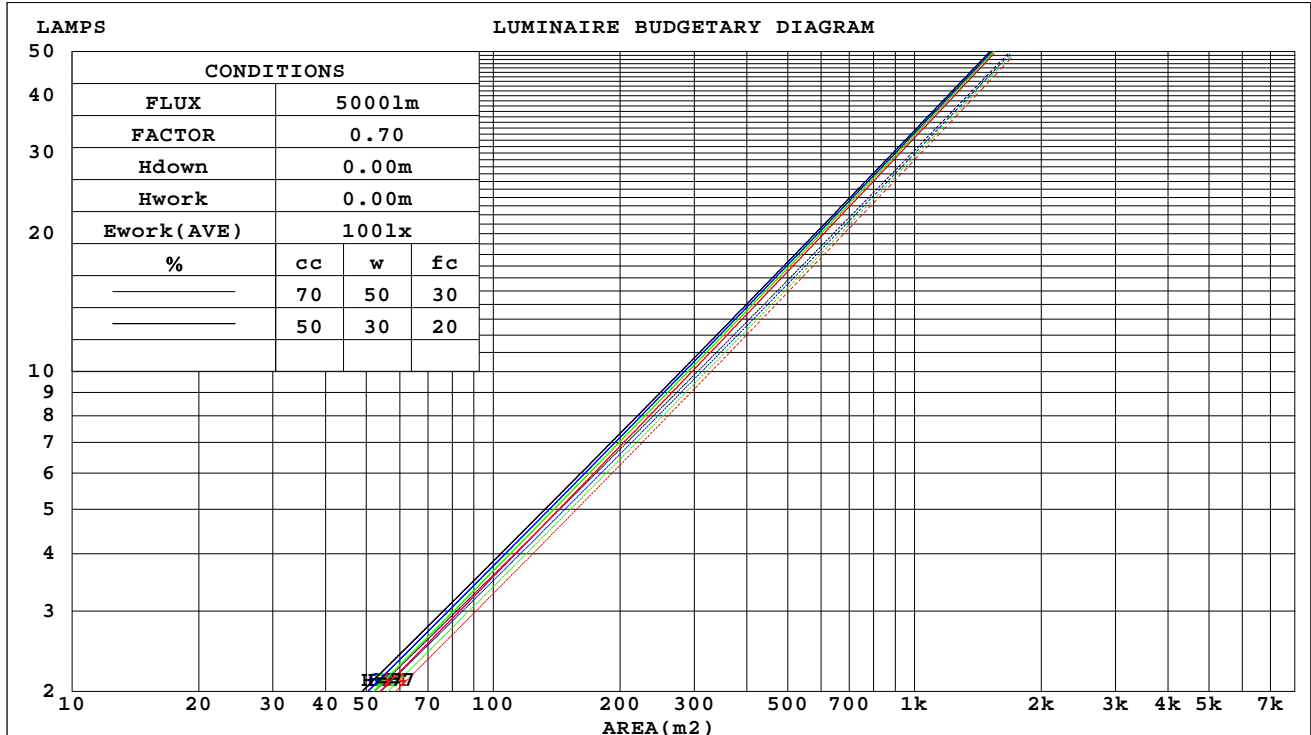
C Range: 0 - 360DEG  
C Interval: 30.0DEG  
Test Speed: HIGH  
Temperature:25.3℃  
Operators:zoe  
Test Date:2023-6-13

Range: 0 - 180DEG  
Interval: 1.0DEG  
Test System:EVERFINE GO-SPEX500\_V1 SYSTEM V2.00.461  
Humidity:65.0%  
Test Distance:3.160m [K=1.0000]  
Remarks: LAMP:BXRE-30H1000-A-83 Ra:97  
LENS:PM-0132 15R  
DRIVER: TDI018NA050EF 500mA  
30minutes warm-up

## CU AND LUMINAIRE BUDGETARY ESTIMATE DIAGRAM

Test:U:120.15V I:0.1699A P:20.173W PF:0.9863 Freq:59.98Hz Lamp Flux:1877.8x1 lm		
NAME: 2319.201-H3AM-500	TYPE:	WEIGHT:
SPEC.: 3000K	DIM.:	SERIAL No.: 2306130765
MFR.: RISE	SUR.: 0.002826m2	Shielding Angle:

cc	80%			70%			50%			30%			10%			0
w	50%	30%	10%	50%	30%	10%	50%	30%	10%	50%	30%	10%	50%	30%	10%	0
fc	20%			20%			20%			20%			20%			0
RCR	RCR:Room Cavity Ratio			Coefficients of Utilization(CU)												
0.0	1.00	1.00	1.00	.98	.98	.98	.94	.94	.94	.90	.90	.90	.86	.86	.86	.84
1.0	.96	.94	.93	.94	.93	.91	.91	.90	.89	.87	.87	.86	.85	.84	.84	.82
2.0	.92	.89	.88	.90	.88	.87	.88	.86	.85	.85	.84	.83	.83	.82	.81	.80
3.0	.88	.86	.83	.87	.85	.83	.85	.83	.82	.83	.82	.80	.82	.80	.79	.78
4.0	.86	.83	.80	.85	.82	.80	.83	.81	.79	.82	.80	.78	.80	.79	.77	.76
5.0	.83	.80	.78	.82	.79	.77	.81	.79	.77	.80	.78	.76	.79	.77	.75	.75
6.0	.81	.78	.75	.80	.77	.75	.79	.77	.75	.78	.76	.74	.77	.75	.74	.73
7.0	.79	.76	.74	.78	.75	.73	.77	.75	.73	.77	.74	.73	.76	.74	.72	.72
8.0	.77	.74	.72	.77	.74	.72	.76	.73	.71	.75	.73	.71	.74	.72	.71	.70
9.0	.75	.72	.70	.75	.72	.70	.74	.72	.70	.74	.72	.70	.73	.71	.70	.69
10.0	.74	.71	.69	.74	.71	.69	.73	.71	.69	.73	.70	.69	.72	.70	.68	.68



C Range: 0 - 360DEG  
C Interval: 30.0DEG  
Test Speed: HIGH  
Temperature:25.3℃  
Operators:zoe  
Test Date:2023-6-13

Range: 0 - 180DEG  
Interval: 1.0DEG  
Test System:EVERFINE GO-SPEX500\_V1 SYSTEM V2.00.461  
Humidity:65.0%  
Test Distance:3.160m [K=1.0000]  
Remarks: LAMP:BXRE-30H1000-A-83 Ra:97  
LENS:PM-0132 15R  
DRIVER: TDI018NA050EF 500mA  
30minutes warm-up

### WEC AND CCEC

Test:U:120.15V I:0.1699A P:20.173W PF:0.9863 Freq:59.98Hz Lamp Flux:1877.8x1 lm		
NAME: 2319.201-H3AM-500	TYPE:	WEIGHT:
SPEC.: 3000K	DIM.:	SERIAL No.: 2306130765
MFR.: RISE	SUR.: 0.002826m2	Shielding Angle:

cc	80%			70%			50%			30%			10%			0	
w	50%	30%	10%	50%	30%	10%	50%	30%	10%	50%	30%	10%	50%	30%	10%	0	
fc	20%			20%			20%			20%			20%			0	
RCR	RCR:Room Cavity Ratio						Wall Exitance Coefficients(WEC)										
0.0																	
1.0	.106	.060	.019	.100	.057	.018	.090	.052	.016	.080	.046	.015	.071	.041	.013		
2.0	.097	.053	.016	.093	.051	.016	.084	.047	.015	.076	.043	.013	.069	.039	.012		
3.0	.090	.048	.014	.086	.046	.014	.079	.043	.013	.072	.040	.012	.066	.037	.011		
4.0	.083	.043	.013	.080	.042	.012	.074	.039	.012	.069	.037	.011	.064	.035	.011		
5.0	.078	.040	.012	.075	.039	.011	.070	.037	.011	.066	.035	.010	.061	.033	.010		
6.0	.073	.037	.011	.071	.036	.010	.067	.034	.010	.063	.033	.010	.059	.031	.009		
7.0	.069	.034	.010	.067	.033	.010	.064	.032	.009	.060	.031	.009	.057	.030	.009		
8.0	.065	.032	.009	.064	.031	.009	.061	.030	.009	.058	.029	.008	.055	.028	.008		
9.0	.062	.030	.008	.061	.030	.008	.058	.029	.008	.055	.028	.008	.053	.027	.008		
10.0	.059	.028	.008	.058	.028	.008	.055	.027	.008	.053	.026	.008	.051	.026	.007		

cc	80%			70%			50%			30%			10%			0
w	50%	30%	10%	50%	30%	10%	50%	30%	10%	50%	30%	10%	50%	30%	10%	0
fc	20%			20%			20%			20%			20%			0
RCR	RCR:Room Cavity Ratio			Ceiling Cavity Exitance Coefficients(CCEC)												
0.0	.161	.161	.161	.137	.137	.137	.094	.094	.094	.054	.054	.054	.017	.017	.017	
1.0	.141	.133	.126	.121	.114	.108	.083	.079	.075	.048	.045	.043	.015	.015	.014	
2.0	.125	.112	.101	.107	.096	.087	.074	.067	.061	.042	.039	.036	.014	.013	.012	
3.0	.112	.095	.082	.096	.082	.071	.066	.057	.050	.038	.033	.029	.012	.011	.010	
4.0	.101	.082	.068	.087	.071	.059	.060	.050	.042	.034	.029	.025	.011	.009	.008	
5.0	.092	.072	.057	.079	.062	.050	.054	.043	.035	.031	.025	.021	.010	.008	.007	
6.0	.084	.063	.048	.072	.055	.042	.050	.038	.030	.029	.023	.018	.009	.007	.006	
7.0	.077	.056	.041	.066	.049	.036	.046	.034	.026	.027	.020	.015	.009	.007	.005	
8.0	.071	.050	.036	.061	.044	.031	.042	.031	.022	.025	.018	.013	.008	.006	.004	
9.0	.066	.045	.031	.057	.039	.027	.039	.028	.019	.023	.016	.012	.007	.005	.004	
10.0	.062	.041	.027	.053	.036	.024	.037	.025	.017	.022	.015	.010	.007	.005	.003	

C Range: 0 - 360DEG  
C Interval: 30.0DEG  
Test Speed: HIGH  
Temperature:25.3℃  
Operators:zoe  
Test Date:2023-6-13

Range: 0 - 180DEG  
Interval: 1.0DEG  
Test System:EVERFINE GO-SPEX500\_V1 SYSTEM V2.00.461  
Humidity:65.0%  
Test Distance:3.160m [K=1.0000]  
Remarks: LAMP:BXRE-30H1000-A-83 Ra:97  
LENS:PM-0132 15R  
DRIVER: TDI018NA050EF 500mA  
30minutes warm-up

## UGR(Unified Glare Rating) Table

Test:U:120.15V I:0.1699A P:20.173W PF:0.9863 Freq:59.98Hz Lamp Flux:1877.8x1 lm										
NAME: 2319.201-H3AM-500					TYPE:			WEIGHT:		
SPEC.: 3000K					DIM.:			SERIAL No.: 2306130765		
MFR.: RISE					SUR.: 0.002826m2			Shielding Angle:		
ceiling/cavity	0.7	0.7	0.5	0.5	0.3	0.7	0.7	0.5	0.5	0.3
walls	0.5	0.3	0.5	0.3	0.3	0.5	0.3	0.5	0.3	0.3
working plane	0.2	0.2	0.2	0.2	0.2	0.2	0.2	0.2	0.2	0.2
Room dimensions	Viewed crosswise					Viewed endwise				
x = 2H y = 2H	9.1	9.6	9.3	9.8	9.9	9.6	10.1	9.8	10.3	10.4
3H	9.0	9.5	9.2	9.7	9.9	9.5	10.0	9.7	10.2	10.4
4H	8.9	9.4	9.2	9.6	9.8	9.4	9.9	9.6	10.1	10.3
6H	8.8	9.3	9.1	9.5	9.8	9.3	9.8	9.6	10.0	10.3
8H	8.8	9.2	9.1	9.5	9.7	9.3	9.7	9.6	10.0	10.2
12H	8.7	9.2	9.0	9.4	9.7	9.2	9.7	9.5	9.9	10.2
4H 2H	9.0	9.5	9.3	9.7	9.9	9.5	10.0	9.8	10.2	10.4
3H	8.9	9.4	9.2	9.6	9.9	9.4	9.8	9.7	10.1	10.3
4H	8.8	9.2	9.1	9.5	9.8	9.3	9.7	9.6	10.0	10.3
6H	8.7	9.1	9.1	9.4	9.7	9.2	9.5	9.5	9.9	10.2
8H	8.7	9.0	9.0	9.3	9.7	9.1	9.5	9.5	9.8	10.2
12H	8.6	8.9	9.0	9.3	9.7	9.1	9.4	9.5	9.7	10.1
8H 4H	8.7	9.0	9.0	9.4	9.7	9.1	9.5	9.5	9.8	10.2
6H	8.5	8.8	9.0	9.2	9.6	9.0	9.3	9.4	9.7	10.1
8H	8.5	8.7	8.9	9.2	9.6	8.9	9.2	9.4	9.6	10.0
12H	8.4	8.6	8.9	9.1	9.5	8.9	9.1	9.3	9.5	10.0
12H 4H	8.6	8.9	9.0	9.3	9.7	9.1	9.4	9.5	9.7	10.1
6H	8.5	8.7	8.9	9.2	9.6	8.9	9.2	9.4	9.6	10.0
8H	8.4	8.6	8.9	9.1	9.5	8.9	9.1	9.3	9.5	10.0
Variations with the observer position at spacings(CIE Pub.117):										
S = 1.0H	+ 1.6 / - 3.0					+ 2.1 / - 3.0				
1.5H	+ 2.1 / - 1.2					+ 2.8 / - 1.7				
2.0H	+ 2.3 / - 9.1					+ 2.6 / - 9.9				

CIE Pub.117, 1878 lm Total Lamp Luminous Flux Correct (8log(F/F0) = 2.2)  
Area: 0.002826 m2

C Range: 0 - 360DEG  
C Interval: 30.0DEG  
Test Speed: HIGH  
Temperature:25.3℃  
Operators:zoe  
Test Date:2023-6-13

Range: 0 - 180DEG  
Interval: 1.0DEG  
Test System:EVERFINE GO-SPEX500\_V1 SYSTEM V2.00.461  
Humidity:65.0%  
Test Distance:3.160m [K=1.0000]  
Remarks: LAMP:BXRE-30H1000-A-83 Ra:97  
LENS:PM-0132 15R  
DRIVER: TDI018NA050EF 500mA  
30minutes warm-up

### UTILIZATION FACTORS TABLE

Test:U:120.15V I:0.1699A P:20.173W PF:0.9863 Freq:59.98Hz Lamp Flux:1877.8x1 lm		
NAME: 2319.201-H3AM-500	TYPE:	WEIGHT:
SPEC.: 3000K	DIM.:	SERIAL No.: 2306130765
MFR.: RISE	SUR.: 0.002826m2	Shielding Angle:

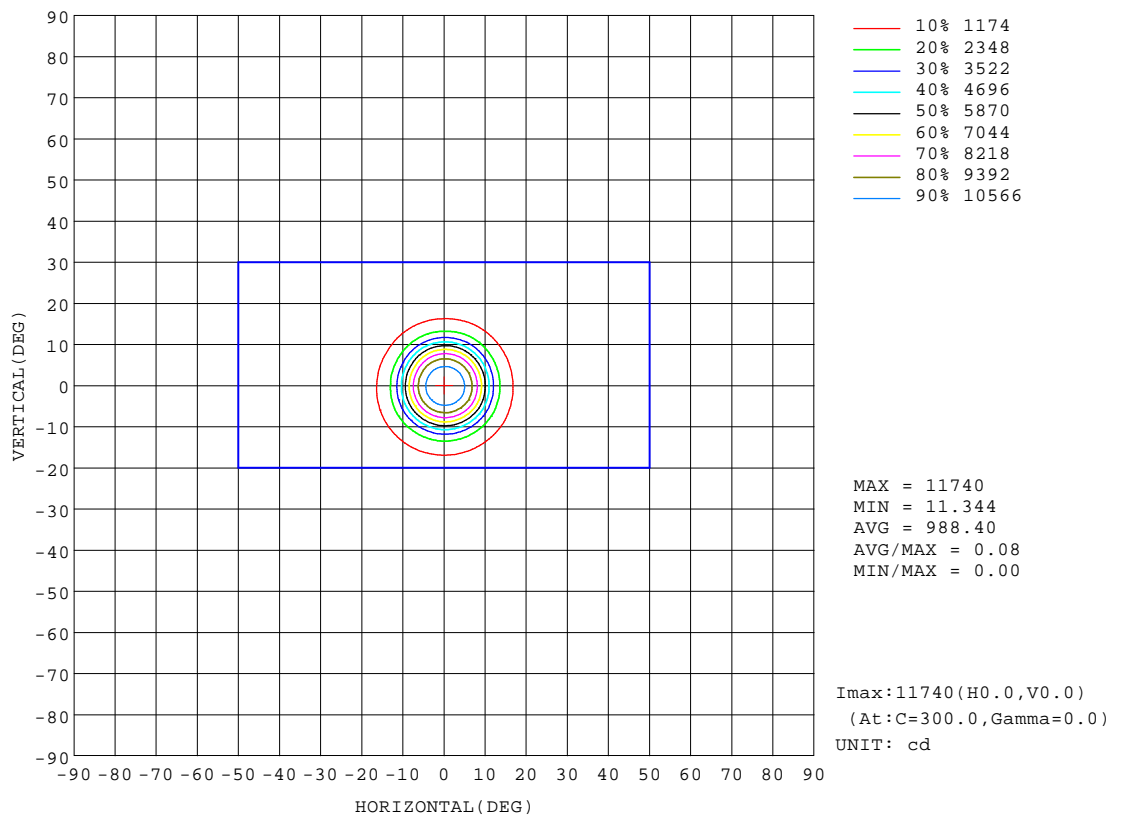
REFLECTANCE										
Ceiling	0.8	0.8	0.8	0.7	0.7	0.7	0.5	0.5	0.5	0
Walls	0.7	0.5	0.3	0.7	0.5	0.3	0.7	0.5	0.3	0
Working plane	0.2	0.2	0.2	0.2	0.2	0.2	0.2	0.2	0.2	0
ROOM INDEX	UTILIZATION FACTORS(PERCENT) $k(RI) \times RCR = 5$									
k = 0.60	76	71	68	76	71	68	75	71	68	65
0.80	82	77	75	81	77	74	80	77	74	71
1.00	85	81	78	85	81	78	83	80	77	74
1.25	88	84	82	87	84	81	86	83	81	77
1.50	90	87	84	89	86	84	88	85	83	79
2.00	92	89	87	91	88	86	89	87	85	80
2.50	94	91	88	92	90	88	90	88	86	81
3.00	95	92	90	93	91	89	91	89	87	82
4.00	96	94	93	95	93	91	92	90	89	83
5.00	97	96	94	96	94	93	92	91	90	84
ROOM INDEX	UF(total)									Direct
According to DIN EN 13032-2 2004			Suspended					SHRNOM = 1.25		

C Range: 0 - 360DEG  
C Interval: 30.0DEG  
Test Speed: HIGH  
Temperature:25.3℃  
Operators:zoe  
Test Date:2023-6-13

Range: 0 - 180DEG  
Interval: 1.0DEG  
Test System:EVERFINE GO-SPEX500\_V1 SYSTEM V2.00.461  
Humidity:65.0%  
Test Distance:3.160m [K=1.0000]  
Remarks: LAMP:BXRE-30H1000-A-83 Ra:97  
LENS:PM-0132 15R  
DRIVER: TDI018NA050EF 500mA  
30minutes warm-up

## ISOCANDELA DIAGRAM

Test:U:120.15V I:0.1699A P:20.173W PF:0.9863 Freq:59.98Hz Lamp Flux:1877.8x1 lm		
NAME: 2319.201-H3AM-500	TYPE:	WEIGHT:
SPEC.: 3000K	DIM.:	SERIAL No.: 2306130765
MFR.: RISE	SUR.: 0.002826m2	Shielding Angle:

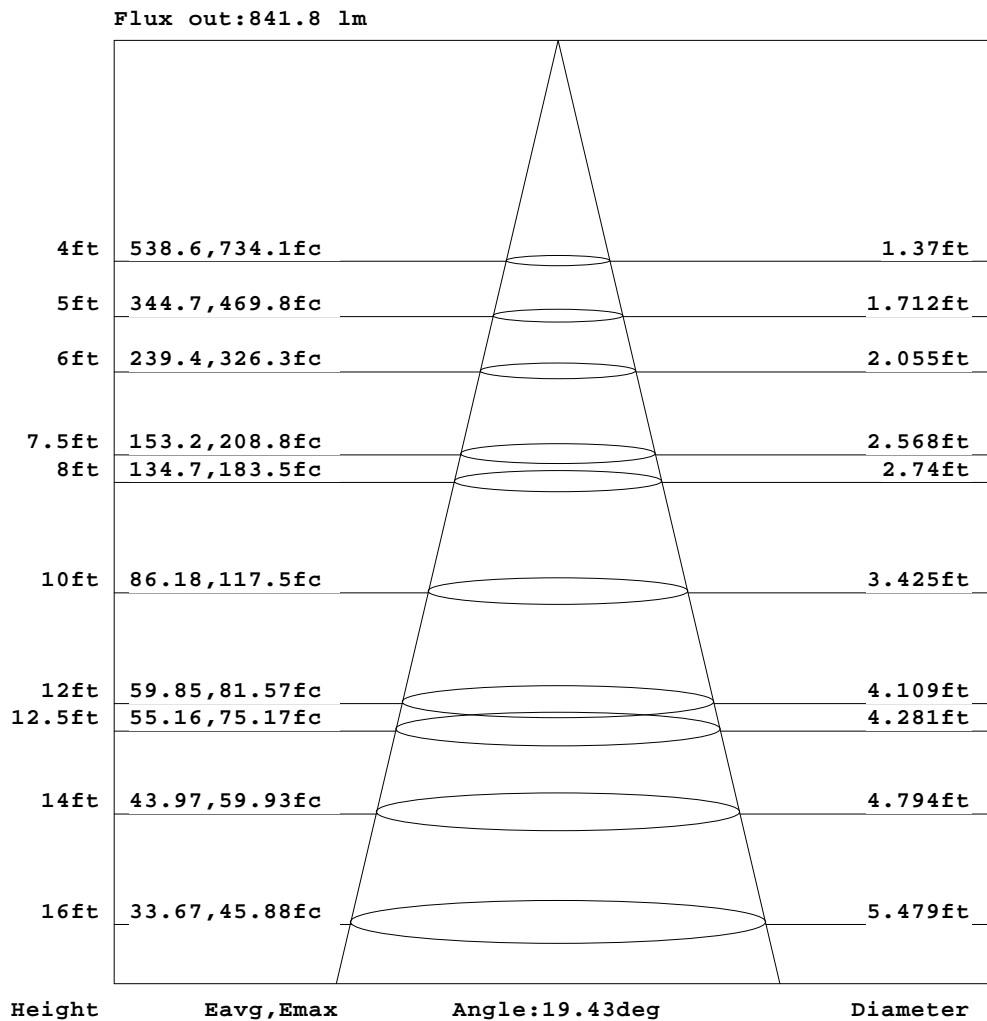


C Range: 0 - 360DEG  
C Interval: 30.0DEG  
Test Speed: HIGH  
Temperature:25.3℃  
Operators:zoe  
Test Date:2023-6-13

Range: 0 - 180DEG  
Interval: 1.0DEG  
Test System:EVERFINE GO-SPEX500\_V1 SYSTEM V2.00.461  
Humidity:65.0%  
Test Distance:3.160m [K=1.0000]  
Remarks: LAMP:BXRE-30H1000-A-83 Ra:97  
LENS:PM-0132 15R  
DRIVER: TDI018NA050EF 500mA  
30minutes warm-up

## AAI Figure

Test:U:120.15V I:0.1699A P:20.173W PF:0.9863 Freq:59.98Hz Lamp Flux:1877.8x1 lm		
NAME: 2319.201-H3AM-500	TYPE:	WEIGHT:
SPEC.: 3000K	DIM.:	SERIAL No.: 2306130765
MFR.: RISE	SUR.: 0.002826m2	Shielding Angle:



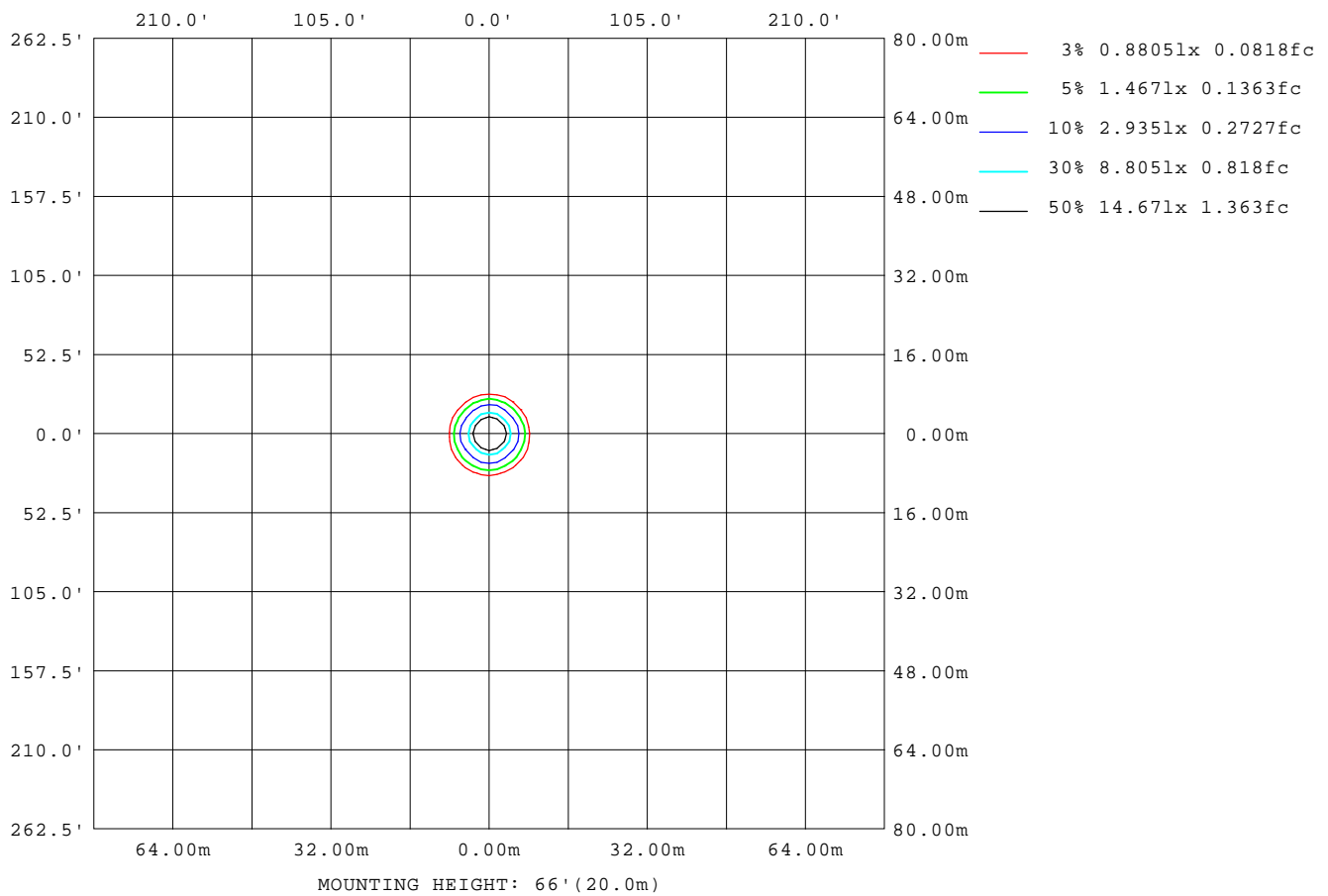
Note:The Curves indicate the illuminated area and the average illumination when the luminaire is at different distance.

C Range: 0 - 360DEG  
C Interval: 30.0DEG  
Test Speed: HIGH  
Temperature:25.3℃  
Operators:zoe  
Test Date:2023-6-13

Range: 0 - 180DEG  
Interval: 1.0DEG  
Test System:EVERFINE GO-SPEX500\_V1 SYSTEM V2.00.461  
Humidity:65.0%  
Test Distance:3.160m [K=1.0000]  
Remarks: LAMP:BXRE-30H1000-A-83 Ra:97  
LENS:PM-0132 15R  
DRIVER: TDI018NA050EF 500mA  
30minutes warm-up

## ISOLUX DIAGRAM

Test:U:120.15V I:0.1699A P:20.173W PF:0.9863 Freq:59.98Hz Lamp Flux:1877.8x1 lm		
NAME: 2319.201-H3AM-500	TYPE:	WEIGHT:
SPEC.: 3000K	DIM.:	SERIAL No.: 2306130765
MFR.: RISE	SUR.: 0.002826m2	Shielding Angle:



C Range: 0 - 360DEG  
C Interval: 30.0DEG  
Test Speed: HIGH  
Temperature:25.3℃  
Operators:zoe  
Test Date:2023-6-13

Range: 0 - 180DEG  
Interval: 1.0DEG  
Test System:EVERFINE GO-SPEX500\_V1 SYSTEM V2.00.461  
Humidity:65.0%  
Test Distance:3.160m [K=1.0000]  
Remarks: LAMP:BXRE-30H1000-A-83 Ra:97  
LENS:PM-0132 15R  
DRIVER: TDI018NA050EF 500mA  
30minutes warm-up

### LED Avg.L Report

Test:U:120.15V I:0.1699A P:20.173W PF:0.9863 Freq:59.98Hz Lamp Flux:1877.8x1 lm		
NAME: 2319.201-H3AM-500	TYPE:	WEIGHT:
SPEC.: 3000K	DIM.:	SERIAL No.: 2306130765
MFR.: RISE	SUR.: 0.002826m2	Shielding Angle:

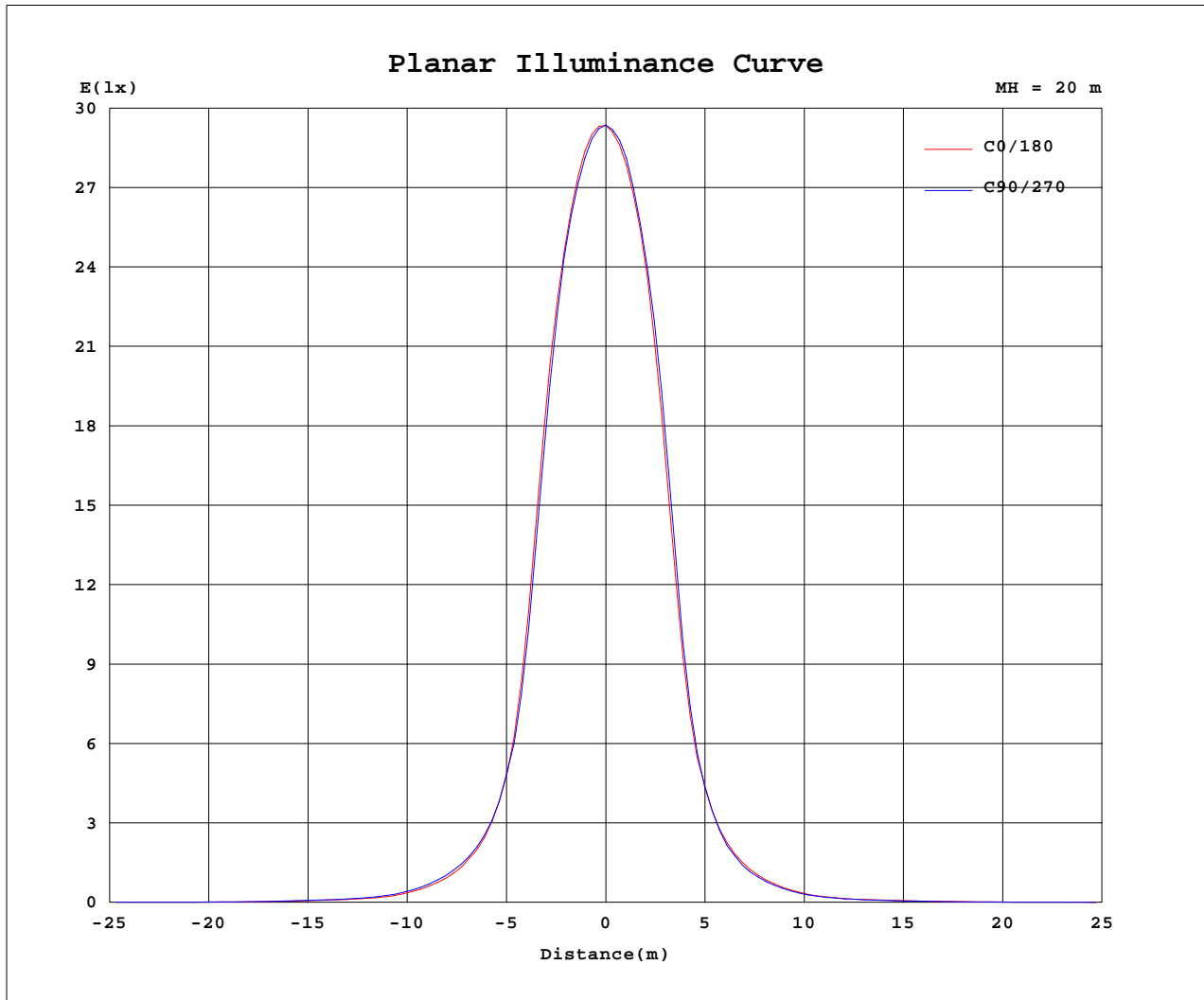
AvgL	cd/m2
L_0~180(65)av	1518
L_0~180(75)av	319
L_0~180(85)av	207
L_90~270(65)av	1498
L_90~270(75)av	335
L_90~270(85)av	171
L_45(65)av	1452
L_45(75)av	321
L_45(85)av	80

Standard: GB/T 29293-2012

C Range: 0 - 360DEG  
C Interval: 30.0DEG  
Test Speed: HIGH  
Temperature:25.3℃  
Operators:zoe  
Test Date:2023-6-13

Range: 0 - 180DEG  
Interval: 1.0DEG  
Test System:EVERFINE GO-SPEX500\_V1 SYSTEM V2.00.461  
Humidity:65.0%  
Test Distance:3.160m [K=1.0000]  
Remarks: LAMP:BXRE-30H1000-A-83 Ra:97  
LENS:PM-0132 15R  
DRIVER: TDI018NA050EF 500mA  
30minutes warm-up

## Planar Illuminance Curve



C Range: 0 - 360DEG  
 C Interval: 30.0DEG  
 Test Speed: HIGH  
 Temperature: 25.3 °C  
 Operators: zoe  
 Test Date: 2023-6-13

Range: 0 - 180DEG  
 Interval: 1.0DEG  
 Test System: EVERFINE GO-SPEX500\_V1 SYSTEM V2.00.461  
 Humidity: 65.0%  
 Test Distance: 3.160m [K=1.0000]  
 Remarks: LAMP: BXRE-30H1000-A-83 Ra: 97  
 LENS: PM-0132 15R  
 DRIVER: TDI018NA050EF 500mA  
 30minutes warm-up

## LUMINOUS DISTRIBUTION INTENSITY DATA

Test:U:120.15V I:0.1699A P:20.173W PF:0.9863 Freq:59.98Hz Lamp Flux:1877.8x1 lm		
NAME: 2319.201-H3AM-500	TYPE:	WEIGHT:
SPEC.: 3000K	DIM.:	SERIAL No.: 2306130765
MFR.: RISE	SUR.: 0.002826m2	Shielding Angle:

Table--1

UNIT: X10cd

C(DEG) (DEG)	0	30	60	90	120	150	180	210	240	270	300	330						
0	1174	1174	1174	1174	1174	1174	1174	1174	1174	1174	1174	1174						
5	1058	1063	1055	1049	1042	1036	1027	1024	1030	1036	1045	1052						
10	593	602	577	560	538	526	510	504	528	544	568	581						
15	170	180	171	170	166	162	153	146	151	154	162	165						
20	64.5	69.1	68.7	70.2	69.8	66.0	60.3	57.1	55.9	56.1	58.9	60.5						
25	27.4	30.1	29.5	31.0	30.3	28.5	25.4	24.1	23.3	23.5	24.8	25.5						
30	11.8	13.0	13.0	13.8	13.7	12.9	11.4	10.8	10.6	10.6	11.0	11.2						
35	6.74	7.22	7.35	7.74	7.63	7.24	6.81	6.48	6.32	6.32	6.39	6.43						
40	4.01	4.33	4.49	4.57	4.57	4.31	4.10	3.92	3.83	3.75	3.80	3.81						
45	2.54	2.72	2.81	2.90	2.90	2.78	2.61	2.49	2.43	2.39	2.45	2.50						
50	1.99	2.09	2.16	2.25	2.26	2.13	2.01	1.89	1.84	1.84	1.86	1.94						
55	1.32	1.39	1.45	1.51	1.50	1.44	1.36	1.28	1.26	1.26	1.26	1.27						
60	0.74	0.77	0.80	0.83	0.80	0.75	0.70	0.65	0.65	0.68	0.70	0.71						
65	0.19	0.18	0.17	0.18	0.18	0.17	0.17	0.16	0.16	0.17	0.18	0.18						
70	0.10	0.10	0.09	0.09	0.09	0.09	0.08	0.08	0.08	0.09	0.09	0.10						
75	0.03	0.03	0.02	0.02	0.02	0.02	0.02	0.02	0.02	0.02	0.03	0.03						
80	0.01	0.00	0.00	0.00	0.00	0.00	0.00	0.00	0.00	0.00	0.00	0.00						
85	0.01	0.00	0.00	0.00	0.00	0.00	0.00	0.00	0.00	0.00	0.00	0.00						
90	0.00	0.00	0.00	0.00	0.00	0.00	0.00	0.00	0.00	0.00	0.00	0.00						
95	0.00	0.00	0.00	0.00	0.00	0.00	0.00	0.00	0.00	0.00	0.00	0.00						
100	0.00	0.00	0.00	0.00	0.00	0.00	0.00	0.00	0.00	0.00	0.00	0.00						
105	0.00	0.00	0.00	0.00	0.00	0.00	0.00	0.00	0.00	0.00	0.00	0.00						
110	0.00	0.00	0.00	0.00	0.00	0.00	0.00	0.00	0.00	0.00	0.00	0.00						
115	0.00	0.00	0.00	0.00	0.00	0.00	0.00	0.00	0.00	0.00	0.00	0.00						
120	0.00	0.00	0.00	0.00	0.00	0.00	0.00	0.00	0.00	0.00	0.00	0.00						
125	0.00	0.00	0.00	0.00	0.00	0.00	0.00	0.00	0.00	0.00	0.00	0.00						
130	0.00	0.00	0.00	0.00	0.00	0.00	0.00	0.00	0.00	0.00	0.00	0.00						
135	0.00	0.00	0.00	0.00	0.00	0.00	0.00	0.00	0.00	0.00	0.00	0.00						
140	0.00	0.00	0.00	0.00	0.00	0.00	0.00	0.00	0.00	0.00	0.00	0.00						
145	0.00	0.00	0.00	0.00	0.00	0.00	0.00	0.00	0.00	0.00	0.00	0.00						
150	0.00	0.00	0.00	0.00	0.00	0.00	0.00	0.00	0.00	0.00	0.00	0.00						
155	0.00	0.00	0.00	0.00	0.00	0.00	0.00	0.00	0.00	0.00	0.00	0.00						
160	0.00	0.00	0.00	0.00	0.00	0.00	0.00	0.00	0.00	0.00	0.00	0.00						
165	0.00	0.00	0.00	0.00	0.00	0.00	0.00	0.00	0.00	0.00	0.00	0.00						
170	0.00	0.00	0.00	0.00	0.00	0.00	0.00	0.00	0.00	0.00	0.00	0.00						
175	0.00	0.00	0.00	0.00	0.00	0.00	0.00	0.00	0.00	0.00	0.00	0.00						
180	0.00	0.00	0.00	0.00	0.00	0.00	0.00	0.00	0.00	0.00	0.00	0.00						

C Range: 0 - 360DEG  
C Interval: 30.0DEG  
Test Speed: HIGH  
Temperature:25.3℃  
Operators:zoe  
Test Date:2023-6-13

Range: 0 - 180DEG  
Interval: 1.0DEG  
Test System:EVERFINE GO-SPEX500\_V1 SYSTEM V2.00.461  
Humidity:65.0%  
Test Distance:3.160m [K=1.0000]  
Remarks: LAMP:BXRE-30H1000-A-83 Ra:97  
LENS:PM-0132 15R  
DRIVER: TDI018NA050EF 500mA  
30minutes warm-up